



## Stock Quartet

*MATTIHOLA INKANA*



Plugs

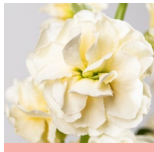


Seeds

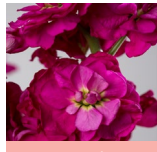
The new flower in town, Stock, symbolizes enjoying life, even when it's not exactly how you want it to be. It is seeing the beautiful in the ugly and silver lightning in the dark, so it can be used to celebrate anything that brings you happiness. It symbolizes eternal beauty as well, making them perfect for everyday flowers to lift up your mood. Their soft aroma gives a fresh atmosphere to your environment.

- Specifically bred to suit the bouquet market, since one stem can make a bouquet on its own
- New unique colors help you bring exceptional color palettes to your arrangements
- Still offers all the desirable characteristics of the standard stock

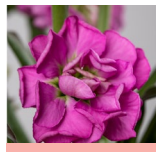
## SUITE:



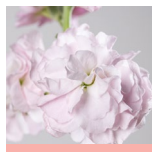
Yellow II



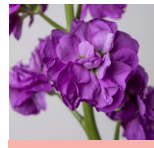
Red



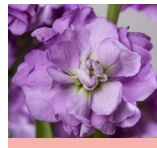
Pink



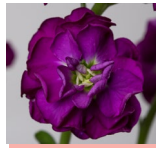
Cherry



Blue



Lavender



Purple



Rainbow

### Additional Colors:

Peach - Cool Pink -  
Deep Rose - Fantasy, Pink -  
Lovely - Sunset - Rose -  
Deep Pink Flush -  
Pink Blush - Apricot II -  
Red Purple - Deep Yellow  
- White - Blue Blush -  
Marine - Marine Blush -  
Sky Blush

## TECHNICAL INFORMATION

### CROP TIME

From planting to harvest: 11 weeks.

### PLANTING DENSITY

100 plants / m<sup>2</sup> net

### PRE-PLANTING

**Soil:** Well drained, loose soil. At least 25 cm deep. (10 in.) Avoid any hard packed soil.

**pH:** 5.5 to 6.5

**Netting:** 2-3 levels

### PINCH

At week 8-9, pinch the apical flower bud once well defined (to form the spray). Must be careful to not remove the side shoots during this work, as it can affect the formation of the spray. This work should be verified in the following week to ensure that all the stems were pinched.

### IRRIGATION

After transplanting, irrigate with overhead irrigation and one week after transplanting, switch to drip irrigation with 4 to 5 L / day / m<sup>2</sup>. If necessary, overhead irrigation reinforcements can be carried out according to organoleptic sampling and atmospheric conditions. Avoid excess water. Soil saturation conditions can promote diseases such as damping off, botrytis, sclerotinia.

Avoid conditions that are either too wet or too dry. Wet conditions can cause diseases including Root Rot. Dry conditions can cause wilting and lower leaf chlorosis which then exposes plants to other infections.

### FERTILIZATION

Begin fertilization one week after transplanting and continue fertilizing until the end of the crop time.

A general fertilization formula can be the following:

N: 120 ppm; P: 40 ppm; K: 160 ppm; Ca: 120 ppm; Mg: 60 ppm; S: 50 ppm; Fe: 2 ppm  
Mn: 2.5 ppm; Cu, Zn & B: 0.2 ppm.

### Gilberic Acid

Optional. Spray if flower height needs improvement. Up to 3 applications can be done with 150 ppm each at weeks 3, 5 and 7 after planting.

### HARVEST

Harvest when stems have 3-5 opened flowers or depending on the client's needs.

### POST HARVEST TREATMENT

Hydrate in AVB solution (0.5 cm<sup>3</sup> / Lt of Water) and AVB Booster (1 cm<sup>3</sup> / Lt) for two hours. Subsequently hydrate in Chrysal Professional 2 at a dose of 10 cm<sup>3</sup> / Lt for 4 hours.

### PESTS & DISEASES

- Leaf Miner
- Thrips
- Botrytis sp
- Pythium sp
- Scelortinia